

Greenhouse gas emission trends and projections in Slovakia 2006

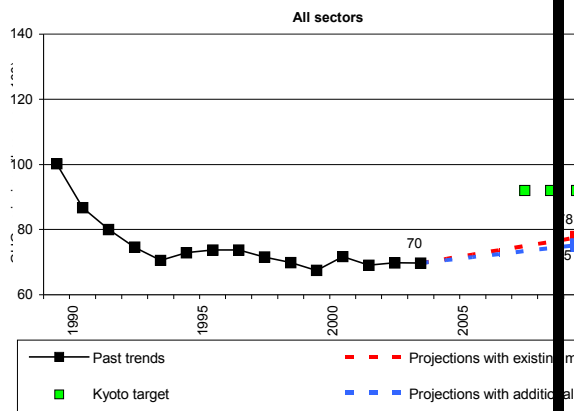
SLOVAKIA

Overview	2
<u>Slovakia</u>	<u>3</u>
<u>Sources of Information</u>	<u>3</u>
<u>Quality and Transparency of Reporting</u>	<u>3</u>
<u>Assessment of Policies and Measures</u>	<u>5</u>
<u>Evaluation of Projections</u>	<u>15</u>
<u>Description of Modeling Approach</u>	<u>17</u>
<u>Country Conclusions</u>	<u>20</u>

Greenhouse gas emission trends and projections in Slovakia 2006

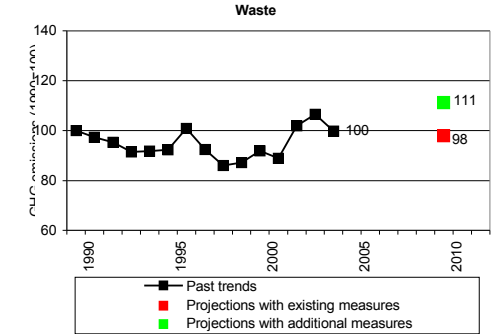
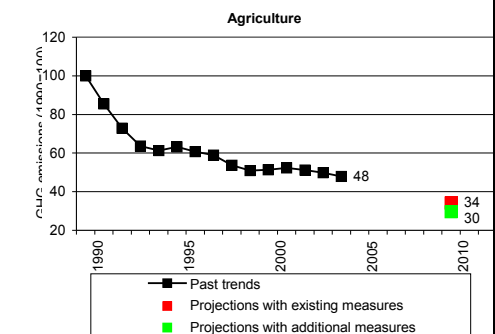
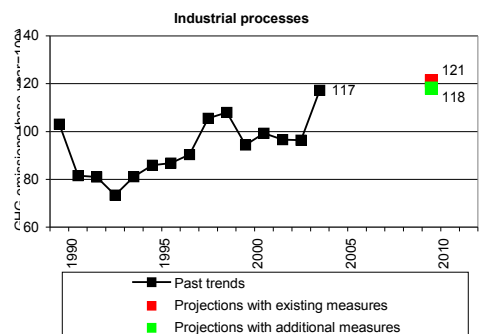
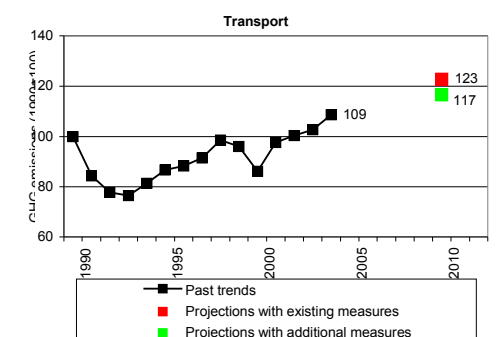
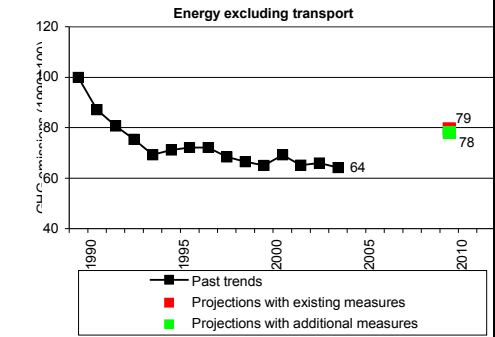
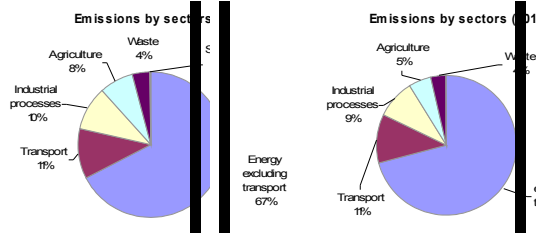
SLOVAKIA

Emissions base year (latest inventory)	73.2 Mt
Emissions 2004	51.0 Mt
Emissions base year (for projections)	71.9 Mt
Projections 2010 with existing measures	55.8 Mt
Projections 2010 with additional measures	54.1 Mt
Kyoto target (absolute, based on latest inventory)	67.4 Mt
Kyoto target (% from base year)	- 8.0 %
Change base year to 2004	- 30.3 %
Change 2003-04	- 0.1 %
Change base year to 2010 with existing measures	- 22.4 %
Change base year to 2010 with additional measures	- 24.8 %
Distance to linear target path 2004	- 24.7 percentage points
Use of Kyoto mechanisms	n.a.
Sinks (Articles 3.3 and 3.4)	n.a.
Emissions in 1990 (Article 3.7)	n.a.



Past emissions: Slovakia's GHG emissions were 0.1 % below those of 2003 and 30.3 % below base-year levels in 2004. Between 2003 and 2004, emission decreases in energy industries and households were offset by increases in mineral production and transport. The emission decreases between 1990 and 2004 — as for other new Member States — were the result of a decline of energy-inefficient heavy industry and the overall restructuring of the economy in late 1980s and early 1990s.

Emission projections: Slovakia will be below the Kyoto target in both 'with existing measures' and 'with additional measures' projections. In 2004, Slovakia's emissions were below both the 'with existing measures' projection and the 'with additional measures' projection.



Slovakia

Please note that the projections relating to the NAP II are excluded from all the EU Country Profiles as they were not available in time to be assessed for the 2006 Country Profiles.

Source s of Inform ation

For policies and measures: Slovakia's Fourth National Communication under the United Nations Framework Convention on Climate Change, 2005, and Demonstrable Progress Report.

For projections: Slovakia's Fourth National Communication under the United Nations Framework Convention on Climate Change, and Demonstrable Progress Report. Information on expired or repealed policies and measures was provided in the report: *Biennial Report 2005* that Slovak Republic submitted to the Monitoring Mechanism in March 2005,

Quality and Transp arency of Report ing

Two chapters in The Fourth National Communication of Slovakia deal with projections and measures. Policies and measures to reduce greenhouse gas emissions are provided for the Energy, Transport, Industry, Agriculture, Forestry and Waste management sectors. The impact of the measures has been quantified in most cases. The table on policies and measures follows the UNFCCC guidelines, but not all discussed policies and measures are presented in the table.

Table 1: Information Provided on Policies and Measures

Information provided	Level provided	Comments
Policy names	+++	
Objectives of policies	+++	
Which greenhouse gases?	CO ₂ , CH ₄ , N ₂ O, PFCs,HFCs,SF ₆	

Greenhouse gas emission trends and projections in Slovakia 2006

Status of Implementation	++	
Implementation body specified	++	In most cases
Quantitative assessment of implementation	++	Estimated mitigation effect for 2010; a few measures are not quantified
Interaction with other P&Ms discussed	++	In some cases

o, +, ++, +++ level of information available increases as the number of + signs increases

Two approaches are taken to develop projections of greenhouse gas emissions and to calculate the total effect of policies and measures. Energy and Forestry projections are based on model calculations; the other sectors projections are based on expert judgement. Both approaches include *without*, *with measures* and *with additional measures* scenarios.

Table 2: Information provided on Projections

Category of Information	Level of Information Provided	Comments
Scenarios considered	Without measures With measures With additional measures	Scenarios are given for sectors corresponding with IPCC sectors and for CO ₂ from fossil fuel combustion and transformation
Expressed relative to inventory for previous years	no	
Starting year	2003	2003 inventory submitted in 2005
Projections	2000,2005,2010,2015, 2020	
Split of projections	yes	Projections split by IPCC main sectors and by gas
Presentation of results	+++	Results presented clearly in both tabular and graphical form
Description of model (level of detail, approach and assumptions)	++	Basic description of the models and further references provided
Discussion of uncertainty	No	
Details of parameters and assumptions	++	information on type of indicators used in scenarios provided

+, ++, +++ level of information available increases as the number of + signs increases

**Assessment
of
Policies
and
Measures**

Table 3 gives an overview of effects of policies and measures. The without measures scenario represents extrapolation of the actual situation from the aspect of source structure and fuel consumption. The figures given for the *with measures* projection are for policies and measures *implemented or adopted* by 2003. The *with additional measures* scenario includes the effects of policies *applicable and/or planned*. The effect of policies planned is derived from the difference between the *with measures* and the *with additional measures* scenarios for WAM scenario and the difference between the *without measures* and the *with measures* scenarios for the WM scenario (see below).

Table 3: Summary of the Effect of Policies and Measures by 2010 included in the Projections (MtCO₂ eq.)

	With measures	With additional measures
Energy (total, excluding transport)	0,8	0,5
Transport (energy)	0,0	0,3
Industrial processes	0,0	0,1
Waste	0,2	0,4
Agriculture	0,1	0,4
Total (excluding sinks)	1,1	1,6

Note: The effect of policies implemented or adopted is derived from the difference between the without measures and the 'without measures' scenario. The 'additional measures' scenario is subtracted from the "with measures" scenario.

Greenhouse gas emission trends and projections in Slovakia 2006

Table 4: Detailed Information on Policies and Measures

Source: European Climate Change Programme (ECCP), Database on Policies and Measures in Europe

<http://www.oeko.de/service/pam/index.php>

<u>Member State</u>	<u>Sector</u>	<u>Name</u>	<u>Category</u>	<u>Type</u>	<u>GHG</u>	<u>Status</u>	<u>Absolute Reduction [kt (Gg) CO₂ eq. p.a.]</u>			<u>Reduction in trading sector</u>
							<u>2005</u>	<u>2010</u>	<u>2020</u>	
Slovakia	LUC	Afforestation and increased protection against fires						56	187	
Slovakia	AGR	Code of Good Agricultural Practice - soil protection	soil protection	voluntary/negotiated agreement	CO ₂	implemented				no effect
Slovakia	AGR	Act 136/2000 on manures	Manure management	Regulatory	CH ₄	implemented	307	552		
Slovakia	AGR	Act 415/2002 on ecological agriculture and production of biofoods	organic farming	Regulatory	CH ₄	implemented				
Slovakia	AGR	Act 188/2003 on application of sludge and bottom sediments on the soil	soil protection	Regulatory	N ₂ O	implemented				
Slovakia	CRS	Act No. 309/1991 Coll. on Protection of	Air pollution	Regulatory	CO ₂	expired				

Greenhouse gas emission trends and projections in Slovakia 2006

<u>Member State</u>	<u>Sector</u>	<u>Name</u>	<u>Category</u>	<u>Type</u>	<u>GHG</u>	<u>Status</u>	<u>Absolute Reduction [kt (Gg) CO2 eq. p.a.]</u>			<u>Reduction in trading sector</u>
							<u>2005</u>	<u>2010</u>	<u>2020</u>	
		the Air								
Slovakia	CRS	Act 286/1992 on Income taxes	Taxation	Economic	CO2	expired				
Slovakia	CRS	Act 478/2002 on air protection	Air pollution	Regulatory; Economic						
Slovakia	CRS	Act 572/2004 on trade with emission quotas and ist implementing regulation 711/2004	Emissions trading	Regulatory; Economic	CO2	implemented	820	1003		
Slovakia	CRS	Act 587/2004 on Environmental Fund	Pollution charges	Economic	CO2	implemented				
Slovakia	CRS	Act 205/2004 on collection, storage and dissemination of information on the environment	information	Regulatory	CO2	implemented				
Slovakia	ENC	Directive 2002/91 on energy economy of production (energy efficiency) in	Buildings - energy efficiency	Regulatory	CO2	implemented			126	

Greenhouse gas emission trends and projections in Slovakia 2006

<u>Member State</u>	<u>Sector</u>	<u>Name</u>	<u>Category</u>	<u>Type</u>	<u>GHG</u>	<u>Status</u>	<u>Absolute Reduction [kt (Gg) CO2 eq. p.a.]</u>		<u>Reduction in trading sector</u>
							<u>2005</u>	<u>2010</u>	
		<u>buildings</u>							
Slovakia	ENS	<u>Regulation 144/2000 on requirements for fuel quality, keeping operating records</u>	Emission standards	Regulatory	CO2	implemented			
Slovakia	ENS	<u>Act on regulation of network branches</u>		Regulatory	CO2	implemented			
Slovakia	ENS	<u>Act 656/2004 on energy and Act 657/2004 on heat energy</u>		Regulatory	CO2	implemented			
Slovakia	ENS	<u>Directive 2003/54/EC on common rules of internal market with electricity and directive 2003/55/EC on common rules of internal market with gas</u>		Regulatory	CO2	implemented			
Slovakia	ENS	<u>Directive 2001/77/EC on support of electricity generated</u>	Renewables	Regulatory	CO2	implemented	477	477	

Greenhouse gas emission trends and projections in Slovakia 2006

<u>Member State</u>	<u>Sector</u>	<u>Name</u>	<u>Category</u>	<u>Type</u>	<u>GHG</u>	<u>Status</u>	<u>Absolute Reduction [kt (Gg) CO2 eq. p.a.]</u>			<u>Reduction in trading sector</u>
							<u>2005</u>	<u>2010</u>	<u>2020</u>	
		from renewable resources								
Slovakia	ENS	Transit network	gas distribution and transmission network	Regulatory	CH4	implemented				
Slovakia	ENS	Directive 2004/67/EC regarding safety of natural gas supply		Regulatory	CH4	planned				
Slovakia	ENS	Regulation 123/2005 on rules of functioning markets with gas		Regulatory	CH4	implemented				
Slovakia	ENS	Regulation 61/2004 on Keeping operation records and other data on stationary pollution sources	emission standards	Regulatory	CO2	implemented				
Slovakia	IND	Sectoral operational program Industry and Services	Environmental Strategy	Economic	CO2; N2O; CH4	adopted				

Greenhouse gas emission trends and projections in Slovakia 2006

<u>Member State</u>	<u>Sector</u> Name	<u>Category</u>	Type	GHG	Status	Absolute Reduction [kt (Gg) CO ₂ eq. p.a.]			Reduction in trading sector
						2005	<u>2010</u>	2020	
Slovakia IND	Reduction of releases in compliance with EU legislation	F-Gases	Economic	HFCs; SF6	implemented	0,127; 0,004	0,135; 0,006		
Slovakia IND	Modernization of production of HNO₃	N ₂ O abatement	Regulatory	N ₂ O	adopted	4	5		
Slovakia IND	New technology of emission sinks	N ₂ O abatement	Regulatory	N ₂ O	adopted	128	997		
Slovakia IND	Modernization of aluminium production	Aluminum Production	Regulatory	PFCs	adopted	0,009	0,009		
Slovakia IND	Installment of inert anodes	Aluminum Production	Regulatory	PFCs	adopted				
Slovakia CRS	Act 245/2003 on integrated prevention and pollution control	IPPC	Regulatory	CH ₄ ; CO ₂ ; HFCs; N ₂ O; PFCs; SF ₆	implemented				moderate
Slovakia LUC	Change in species composition of forests and	forest management	Regulatory	CO ₂	implemented	cl	cl		

Greenhouse gas emission trends and projections in Slovakia 2006

<u>Member State</u>	<u>Sector</u> Name	<u>Category</u>	Type	GHG	Status	Absolute Reduction [kt (Gg) CO ₂ eq. p.a.]			Reduction in trading sector
						2005	<u>2010</u>	2020	
		protection of carbon in forests affected by emissions							
Slovakia LUC	Medium term agricultural policy - forest management	forest management	Regulatory	CO ₂	implemented	cl	cl		
Slovakia LUC	Act 217/2004 on forest reproduction material	forest management	Regulatory	CO ₂	implemented	cl	cl		
Slovakia LUC	Act 326/2005 on forests	forest management	Regulatory	CO ₂	implemented	cl	cl		
Slovakia TRA	Act 725/2004 on operation of vehicles and regulation 584/2004 of measures to reduce emissions from combustion engines installed in non-road equipment	emission control	Regulatory	CO ₂	implemented				
Slovakia TRA	Directive 2003/30/EC on support of biofuels	biofuels	Regulatory	CO ₂	implemented	324	361		

Greenhouse gas emission trends and projections in Slovakia 2006

<u>Member State</u>	<u>Sector</u>	<u>Name</u>	<u>Category</u>	Type	GHG	Status	Absolute Reduction [kt (Gg) CO ₂ eq. p.a.]			Reduction in trading sector
							2005	<u>2010</u>	2020	
		and other renewable energy resources utilization in transport								
Slovakia	TRA	Regulation of technical requirements on certification on motor vehicles (Directive 70/156/EC)	emission control	Regulatory	CO ₂	implemented				
Slovakia	TRA	Regulation on technical requirements regarding measures against pollution of air by gases from vehicles with ignition. (Directive 70/220/EC)	emission control	Regulatory	CO ₂	implemented				
Slovakia	TRA	Regulations on technical measures against emissions from diesel motors. ((Directive 72/306/EC;	emission control	Regulatory	CO ₂	implemented				

Greenhouse gas emission trends and projections in Slovakia 2006

Member State	Sector	Name	Category	Type	GHG	Status	Absolute Reduction [kt (Gg) CO2 eq. p.a.]			Reduction in trading sector
							2005	2010	2020	
		88/77/EC)								
Slovakia	TRA	Regulation on technical requirements on fuel consumption of motor vehicles (Directive 80/1268/EC)	emission control	Regulatory	CO2	implemented				
Slovakia	WAM	Waste water treatment - Municipal	wastewater	Regulatory	CH4; N2O	implemented	26,8	69,1		no effect
Slovakia	WAM	Waste water treatments - industrial waters	wastewater	Regulatory	CH4; N2O	implemented	3	16		no effect
Slovakia	WAM	Act 238/1991 on Waste	waste management practices	Regulatory	CH4	implemented				
Slovakia	WAM	Act 529/2002 on packages	waste prevention or recycling	Regulatory	CH4	implemented				
Slovakia	WAM	Act 364/2004 on waters	wastewater	Regulatory	CH4	implemented				

Greenhouse gas emission trends and projections in Slovakia 2006

<u>Member State</u>	<u>Sector</u>	Name	<u>Category</u>	Type	GHG	Status	Absolute Reduction [kt (Gg) CO2 eq. p.a.]			Reduction in trading sector
							2005	<u>2010</u>	2020	
Slovakia	WAM	Act 17/2004 on charges for waste disposal	waste management practices	Economic	CH4	implemented				

Evaluation of Projections

The data in Tables 5-7 are based on information from NC4

Table 5: Summary of projections by gas in 2010 (MtCO₂ equivalent)

	Base year	with measures	with additional measures
Carbon dioxide (excl. sinks)	59,4	48,2	47,4
Methane	6,3	4,0	3,6
Nitrous oxide	5,8	3,2	2,9
HFCs*	0,271	0,279	0,156
PFCs		0,012	0,012
SF ₆		0,019	0,015
Total (excl. sinks)	71,9	55,8	54,1
% change relative to base year (excl. sinks)		-22,4%	-24,7%

*base year for F-gases is 1995

Table 6 summarises the projections by sector. Transport is projected to increase emissions in both: *with measures* and *with additional measures* projections. Energy as a whole, industry, agriculture, and waste sector reduce emissions by 2010.

The *with measures* projection shows that the currently implemented or adopted measures of Slovakia could reduce greenhouse gas emissions by 2010 by 22.4% and with additional measures by 24.7%.

Table 6: Summary of projections by sector in 2010 (MtCO₂ eq.)

	Base year	with measures	% change relative to 1990	with additional measures	% change relative to 1990
Energy (total, excluding transport)	52,5	39,5	-25%	39,0	-26%
Transport (energy)	5,2	6,4	23%	6,0	17%
Industrial processes	4,3	5,2	21%	5,0	18%
Waste	2,1	2,1	-2%	1,7	-19%
Agriculture	7,9	2,7	-66%	2,3	-70%
Total (excl. sinks)	71,9	55,8	-22%	54,1	-25%

Greenhouse gas emission trends and projections in Slovakia 2006

Table 6 extended: Summary of projections by sector and by gas in 2010 (MtCO₂ eq.)

	Carbon Dioxide			Methane			Nitrous Oxide			F-gases		
	Base year	With measures	With additional measures	Base year	With measures	With additional measures	Base year	With measures	With additional measures	Base year	With measures	With additional measures
Energy (exc transport)	50,891	38,116	37,641	1,429	1,255	1,255	0,187	0,129	0,128	0,000	0,000	0,000
Transport (energy)	5,071	6,081	5,757	0,022	0,032	0,032	0,076	0,238	0,238	0,000	0,000	0,000
Industrial processes	3,484	3,894	3,894	0,000	0,000	0,000	0,508	0,965	0,965	0,271	0,309	0,182
Waste	0,000	0,149	0,148	2,058	1,870	1,514	0,040	0,038	0,038	0,000	0,000	0,000
Agriculture	0,000	0,000	0,000	2,838	0,882	0,835	5,022	1,804	1,497	0,000	0,000	0,000
Total (excl. sinks)	59,446	48,24	47,44	6,347	4,038	3,635	5,833	3,173	2,866	0,271	0,309	0,182

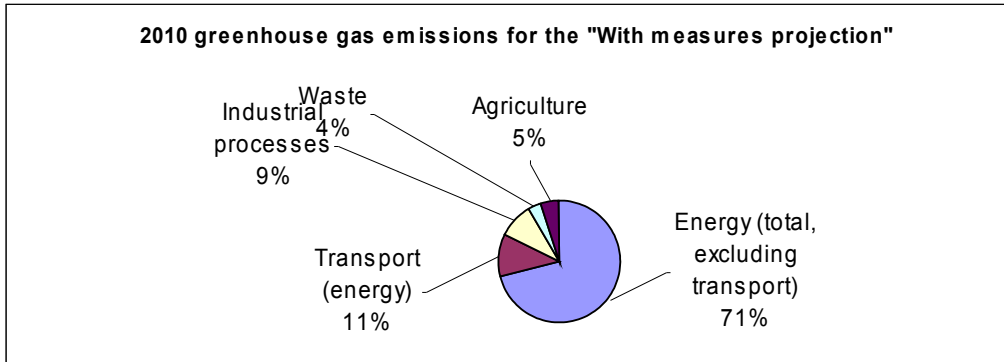


Table 7: Assessment of the Target

	Excl. sinks	
	MtCO₂ equiv.	% of base year level (six gas basket)
Base year emissions (from projections)	71,9	100%
Kyoto Commitment/burden sharing	66,1	-8,0%
With existing P&Ms projections	55,8	77,6%
Gap (-ve means no gap)	-10,4	-14,4%
With additional P&Ms projections	54,1	75,3%
Remaining gap	-12,0	-16,7%
Effect of flexible mechanisms		0,0%
Remaining gap (if target includes flex mechs)	-12,0	-16,7%

Description of Modeling Approach

Projections of energy related CO₂ emissions

Updated Windows modules BALANCE and IMPACT of the ENPEP (Energy and Power Evaluation Program, Argonne National Laboratory, Illinois, USA) software package which represents an integrated approach of energy system modelling, were applied for modelling. The key assumptions and input data adopted under the development of modelling scenarios of CO₂ emissions from fossil fuel combustion and transformation are as follows:

Development of final energy consumption in individual sectors;

Structure of sources which participate in transformation of primary energy sources (PES);

Conversion, transport and distribution of fuels and energies from primary sources to their final consumption

Input data for modelling

Updated Windows modules BALANCE and IMPACT of the ENPEP software supplemented with the MESSAGE software package were applied for modelling.

Macro-economic and demographic growth rate figures were identical with these one checked by the Slovak Ministry of Environment and submitted in March 2005 to the EK for EU-25 wide GHG projections. Data are given in Table A1 in Annex.

Forecast of PES consumption (Energy Policy of the Slovak Republic- Draft proposal, 2005, www.economy.gov.sk).

Energy supply side forecasts.

Energy demand side forecasts;

Scenario of electricity generation in the Slovak Electricity, a.s.;

Perspectives of crude oil processing in the Slovak Republic;

Structure of road vehicle fleet, annual vehicle mileage and their specific consumption;

Transport outputs in railway, water and air transport;

Assumptions applied for modelling:

2003 - base year for projections; inventory emission data from the NIR 2005 of the Slovak Republic (www.enviro.gov.sk);

Emissions from mobile sources are also involved in this category.

Growth rate of fossil fuel consumption in technologies will directly follow gross value added growth rate.

Autonomous energy efficiency improvement by 1% yearly (elasticity) for heat generation in the industrial heat plants was assumed;

Heat consumption will be the driving force for electricity generation in the industrial CHP.

Description of scenarios:

Without measures scenario (reference scenario):

Excluded all PAMs implemented, adopted or planned after the base year of projections (2003) – in the Slovak case the impact of the Act No. 478/2002 Coll. on Air Protection including the BAT requirements for the large and middle scale emission sources and domestic Cap & Trade system for the SO₂ emissions.

With measures scenario:

Implemented and adopted PAMs related to the CC in and after the base year for projections (2003).

Impact of the Directive 2003/87/EC establishing a scheme for greenhouse gas emission allowance trading within the Community 2003/87/ES has been followed.

Due to the former national legislation in the air protection area (focused on basic air pollutants) the only small room remained for implementing of CC related PAMs – assumptions on combined combustion of coal and biomass with 30% share of biomass and on fuel switching from the liquid fuels to natural gas have been adopted for modelling.

With additional measures scenario:

PAMs planned after the base year for projections and related to the CC (2003).

Directive 2001/77/EC on the promotion of electricity produced from renewable energy sources in the internal electricity market – total reduction potential of RES consisting of small hydropower plants, biomass, wind, geothermal, solar and biogas in 2010 was 476 kt of CO₂;

Directive 2003/30/EC on the promotion of the use of biofuels or other renewable fuels for transport- reduction potential in 2010 related to this measure has been established as of 323.5 kt CO₂;

Directive 2002/91/EC on the energy performance of buildings – related input data were not available. Forecasts of heat consumption for new buildings developed under the World Bank project for National energy efficiency study for the Slovak Republic were used.

Directive 2004/7/EC on the promotion of cogeneration – relevant data to quantify possible impact were not available; this directive will be a subject of analyses during preparation of 4th National Communication on CC;

Annual growth rate of Value Added (VA) and other indicators used for projections

Annual growth rate	2000/2005	2005/2010	2010/2015	2015/2020	2020/2025	2025/2030
<i>In %</i>						
Gross domestic product - GDP	4.10	5.30	4.40	4.40	4.40	4.40
Household consumption	3.20	4.20	5.28	5.57	5.17	4.94
Value added - VA	4.24	4.38	4.93	5.21	5.12	4.88
VA industry total, of which:	3.78	4.03	4.69	5.12	5.15	4.77
<i>Of which</i>						
VA - metal production	3.10	3.90	3.80	3.60	3.70	3.60
VA - chem. industry total	5.81	5.59	5.59	5.79	5.40	4.90
<i>Of which</i>						
VA - production of inorganic fertilizers	1.55	3.10	2.86	2.96	2.84	2.89
VA - petro-chemistry	5.86	5.65	5.15	4.86	4.11	3.46
VA - other chem. production	5.54	6.38	6.50	6.39	5.79	5.14
VA - pharmaceutical/cosmetics	10.48	6.99	7.06	7.33	6.75	5.99
VA - non-metal materials	3.40	4.37	4.67	4.77	4.55	4.09
<i>Of which</i>						
Cement and auxiliary products	2.96	4.63	5.12	4.87	4.41	3.73
Ceramics	2.63	3.99	4.47	4.41	4.47	3.95
Glass production	3.04	4.40	4.13	4.56	4.62	4.12
Other non-metal materials	5.92	4.28	4.90	5.01	4.84	5.00
VA Paper, cellulose and press production	1.92	4.05	4.76	5.34	5.01	4.51
<i>Of which</i>						
Paper and cellulose production	-3.60	0.77	1.46	1.69	1.76	1.80
Publishing	5.82	5.65	6.03	6.47	5.82	5.09
VA food industry	1.61	2.81	4.65	5.00	4.88	4.32
VA textile and leather industry	3.42	3.11	3.20	3.38	3.53	2.90
VA engineering production	4.50	4.40	4.99	5.55	5.73	5.42
VA other industry	5.17	4.08	4.59	4.97	5.05	4.62
VA construction	4.61	3.53	7.42	6.71	5.24	4.95
VA Services and trade	5.13	4.87	5.16	5.39	5.31	5.08
<i>Of which</i>						
Commercial services	5.28	5.15	5.79	6.14	5.71	5.41
Non-commercial services	5.26	4.77	4.77	4.80	4.95	4.82
Trade	4.96	4.73	4.95	5.19	5.20	4.98
VA agriculture	2.23	2.64	3.31	3.31	3.07	2.74
VA energy	-1.27	0.81	1.45	1.93	2.29	2.42
Households	-0.01	-0.07	-0.11	-0.19	-0.30	0.00

Country Conclusions

The main documents used for this summary were: the Fourth National Communication and the Demonstrable Progress Report of the Slovak Republic submitted in late 2005. The level of detail in policies and measures chapter is appropriate and is line with UNFCCC guidelines. The details of the methodology for the projections are described. The scenarios are provided for sectors and for total GHGs, but not separately for CO₂ methane and nitrous oxide. The key policies and measures are summarised in a table, which makes clear the potential greenhouse gas savings.

The projected decrease from the base year with measures implemented and adopted is -22.4% in the basket of six greenhouse gases by 2010, excluding land use change and forestry. Additional policies and measures are applicable to reduce GHG emissions to 24.7% below the base year levels by 2010 (excluding LUCF). This shows that Slovakia has potential to go beyond Kyoto targets.

SLOVAKIA - Priority indicators (see Chapters A5.2 and A5.4 for more information on indicators)

